

Brookstone[®]

SMART PLUG

USER MANUAL



FCC Statement:

1. This device complies with Part 15 of the FCC Rules. Operation is subject to the following two conditions: (1) this device may not cause harmful interference, and (2) this device must accept any interference received, including interference that may cause undesired operation.

Caution: The user is cautioned that changes or modifications not expressly approved by the party responsible for compliance could void the user's authority to operate the equipment.

Note: This equipment has been tested and found to comply with the limits for a Class B digital device, pursuant to part 15 of the FCC Rules. These limits are designed to provide reasonable protection against harmful interference in a residential installation. This equipment generates uses and can radiate radio frequency energy and, if not installed and used in accordance with the instructions, may cause harmful interference to radio communications. However, there is no guarantee that interference will not occur in a particular installation. If this equipment does cause harmful interference to radio or television reception, which can be determined by turning the equipment off and on, the user is encouraged to try to correct the interference by one or more of the following measures:

- Reorient or relocate the receiving antenna.
- Increase the separation between the equipment and receiver.
- Connect the equipment into an outlet on a circuit different from that to which the receiver is connected.
- Consult the dealer or an experienced radio/TV technician for help.

2. This equipment complies with FCC radiation exposure limits set forth for an uncontrolled environment. This equipment should be installed and operated with a minimum distance of 20cm between the radiator and any part of your body.

For more products please visit
www.smartpointco.com or www.brookstone.com

SPECIFICATIONS

Model: BKSPB-BF

Main Material: PC V0 Fire Retardant

Input Voltage: AC 100-240V 50/60Hz

Max Load: 10A

Max Power: 1100W (110V)

Working temperature: -4° - 140°

Size: 49x31mm

Wi-Fi Standard: 2.4GHz 802.11b/g/n

System Support: Android™/iOS

WARRANTY INFORMATION

One Year Limited Warranty.

Customer Service: 732-994-2301; email: help@smartpointco.com

The BROOKSTONE trademark, names and logos are owned by
BKST Brand Holdings LLC ©2021. All rights reserved.

Manufactured, marketed and distributed by Smartpoint LLC, under license.

Amazon, Alexa and all related logos are trademarks of Amazon.com, Inc. or its affiliates.

Google, Android and Google Play are trademarks of Google LLC.

App Store® is a registered trademark of Apple, Inc.

All trademarks and registered trademarks are property of their respective owners.

Made in China

©Smartpoint LLC,
250 Liberty Street, Suite 1A
Metuchen, NJ 08840

FEATURES

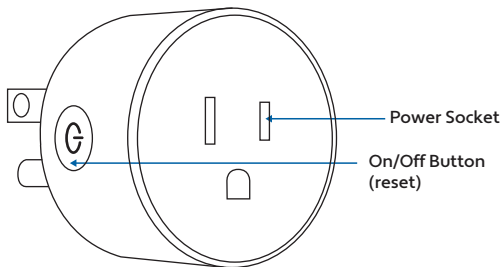
- Wi-Fi remote controlled
- Programmable with Schedule
- App and Voice Control
- Works with Hey Google or Amazon Alexa



For more assistance on Troubleshooting,
Connecting and Tips on Using your New Device,
you can visit:

www.smartpointco.com/faq-trouble-shooting

PRODUCT CONFIGURATION



Items included in package:
Smart Plug and User Manual.

DOWNLOAD APP

1. Android™: download “Brookstone Smart” app on Google Play.
2. iPhone: download “Brookstone Smart” app from the App Store.

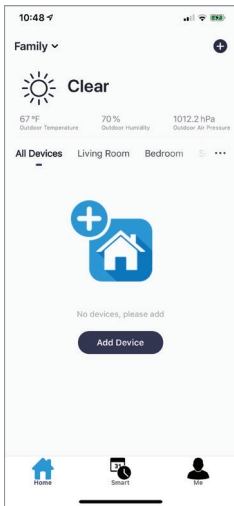
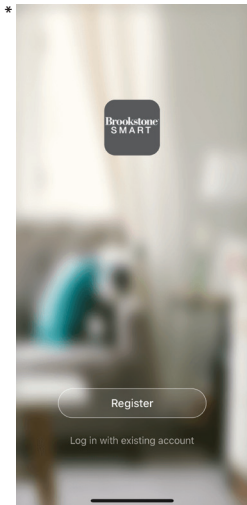


Brookstone Smart



REGISTRATION AND LOGIN

1. Run the “Brookstone Smart” app from your smart phone.
2. Register and login.



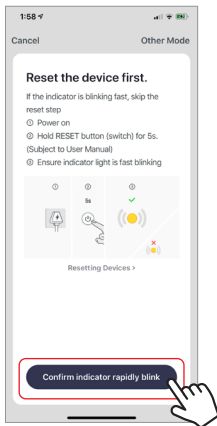
*Screenshots may slightly differ from actual app.

ADD DEVICE

1. Plug in Smart Plug into electrical socket and hold down on/off button until the light blinks rapidly.
2. Make sure phone is connected to your Wi-Fi network and that it is a 2.4GHz network.
3. Press the (+) symbol in the top right corner of the app and select the Smart Plug from the list of devices to add.

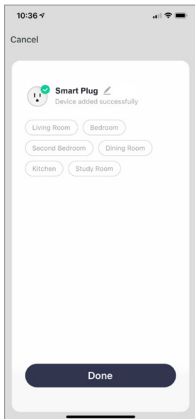
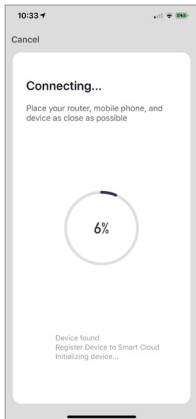


4. Confirm indicator light is blinking and press the “confirm indicator rapidly blinks” button.



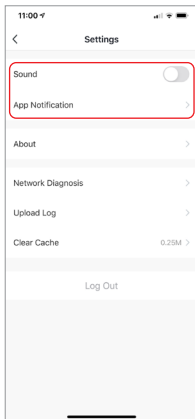
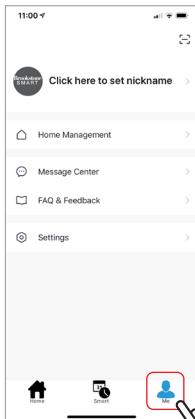
5. Make sure phone is connected to the Wi-Fi network that the device will be connected to. Enter your password for the Wi-Fi network.

6. Connecting process will begin. Do not turn off Smart Plug or phone while connecting. Wait for connection process to complete.
7. Once device has been successfully added, name the device what you would like it to be called in the app. The Smart Plug is ready for use.



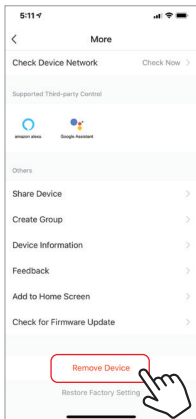
PUSH NOTIFICATIONS

1. You can turn on/off notifications for all devices connected to app by clicking on the “Me” button at the bottom right of the screen.
2. Then click on “Settings” button. From there you can turn on/off all notifications.



REMOVE A DEVICE

1. From the home screen, click on the device you would like to remove.
2. Then click on the edit symbol on the top right of the screen.
3. From there you would then click the “Remove Device” button at the bottom of the screen.

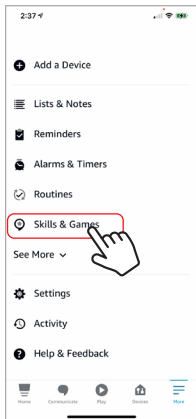
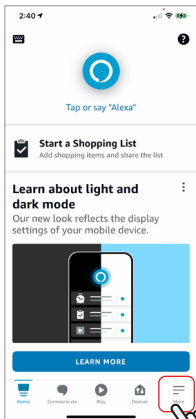


How to control the Smart Plug with Amazon Alexa



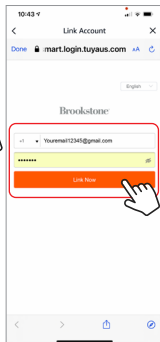
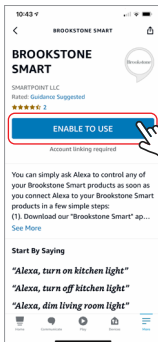
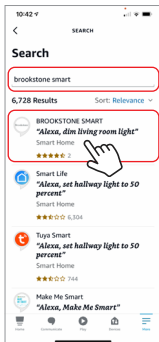
Please make sure that your Alexa app is connected to your Amazon Echo and both work together successfully on your Wi-Fi home network.

Step A. Log into your Alexa app, tap bottom right corner, and then tap “Skills & Games”.

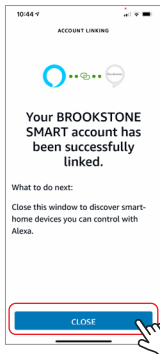
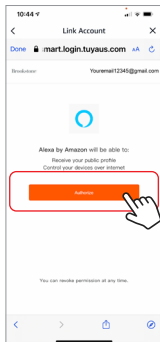
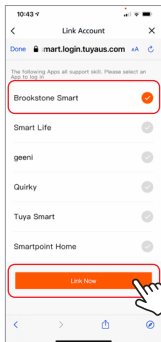


Step B. Type “Brookstone Smart”, find “Brookstone Smart” app in the search results and tap “enable to use”.

Step C. Enter your account info for the “Brookstone Smart” app, tap “Link Now”, then tap “Brookstone Smart” and tap “Link Now” again. On the next page press “Authorize” to link Brookstone Smart account to Alexa.



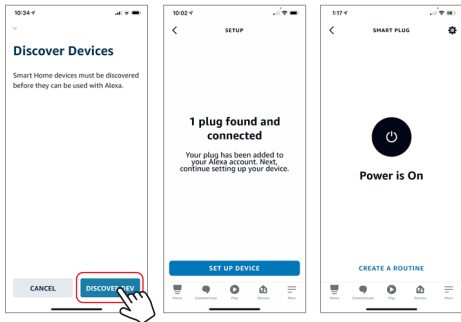
Step D. Once your Brookstone Smart account is successfully linked to Alexa, the next page will pop up. Tap "Close" at the bottom and then tap "Discover Devices" on the next page at the bottom right.



Step E. Wait a few seconds for Alexa to detect the Smart Plug from the Brookstone Smart app and you will find the device named "Smart Plug" has been paired to Alexa app from "Brookstone Smart" app. Follow the on-screen instructions to further set up the device.

The plug will be named whatever you named it in the Brookstone Smart App.

After **Step E** is done, you can now control the Smart Plug with Alexa app from the devices page.



Step F. Now you are able to control the Smart Plug via Amazon Alexa with your voice.

Try these commands and see what happens by asking Alexa:

- Alexa, turn on “Smart Plug”
- Alexa, turn off “Smart Plug”

Note: The device name is the one you give to the smart plug on “Brookstone Smart” app. Let’s name it “Living Room”.

For example, now you can say:

- “Alexa, turn on the Living Room”,
- “Alexa, turn off the Living Room”, etc.

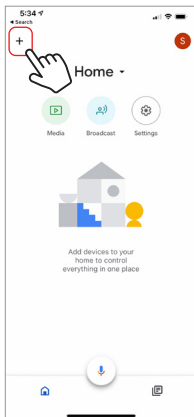
Any device you connect to the Brookstone Smart App should automatically be added to Alexa. If it does not add automatically, ask Alexa to discover devices.

How to control the Smart Plug with Google Assistant

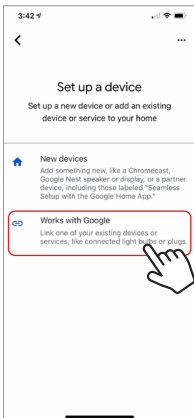
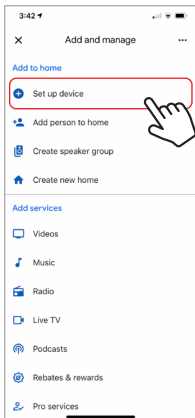
1. Pair Smart Plug with Brookstone Smart App and name it with an easily recognizable name.
2. Download the Google Home App and register and log in with your Google Account info.



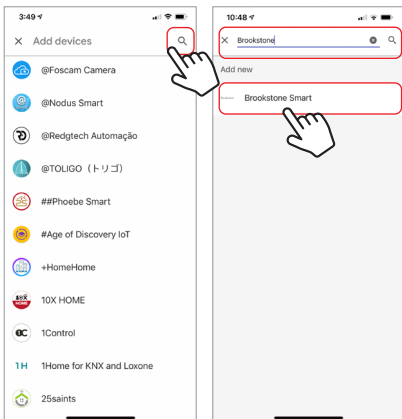
Step A. Once you are logged into your Google Home App, press the (+) icon in the top left hand corner.



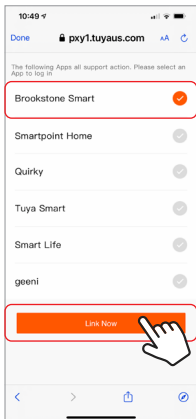
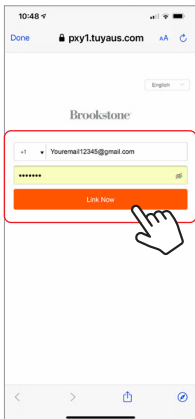
Step B. On the next page press “Set up device”, and then on the page after that select “Works with Google”.



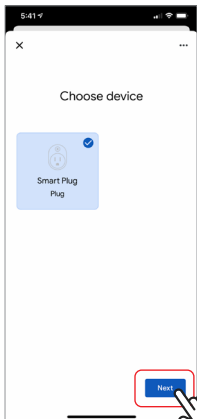
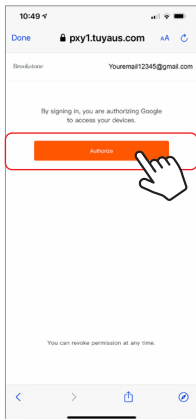
Step C. Press the magnifying glass icon to type in the app you would like to link to your Google Home account. In this case, type in “Brookstone Smart” and then select it from the list below.



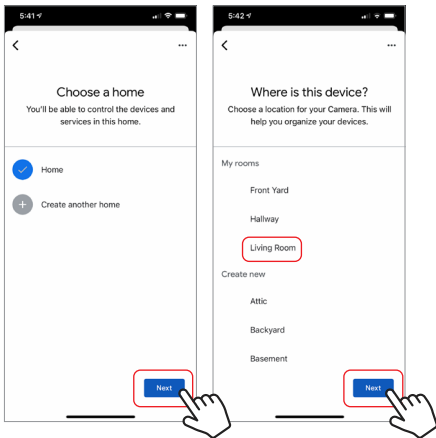
Step D. Enter your account info for the “Brookstone Smart” app, tap “Link Now”. On the next page select the correct app to link and then press “Link Now” again.



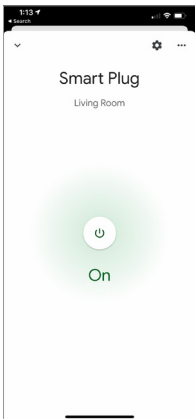
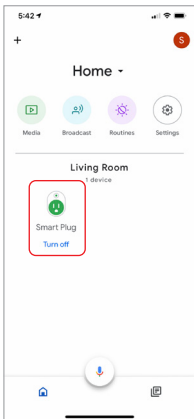
Step E. Tap “Authorize” on the next page to link your Brookstone Smart Account with Google Assistant. After that you will see any devices that are connected to your Brookstone Smart App. Choose the device you would like to add to the Google Home App and press “Next”.



Step F. Select the home you would like the device to be linked to and then select which room you would like the assign it to.



Step G. Your device is now linked to your Google Home App. You can now control it through the Google Home App on your phone or through a Google Assistant-enabled speaker.



Step H. You also are able to control the Smart Plug via Google Assistant with your voice.

Just start with “Hey Google”.

“Turn on Smart Plug”

“Turn off Smart Plug”

Note: The device name is the one you give to the plug on the “Brookstone Smart” App . Let’s name it “Living Room”.

For example:

“Turn on Living Room”

“Turn off Living Room”